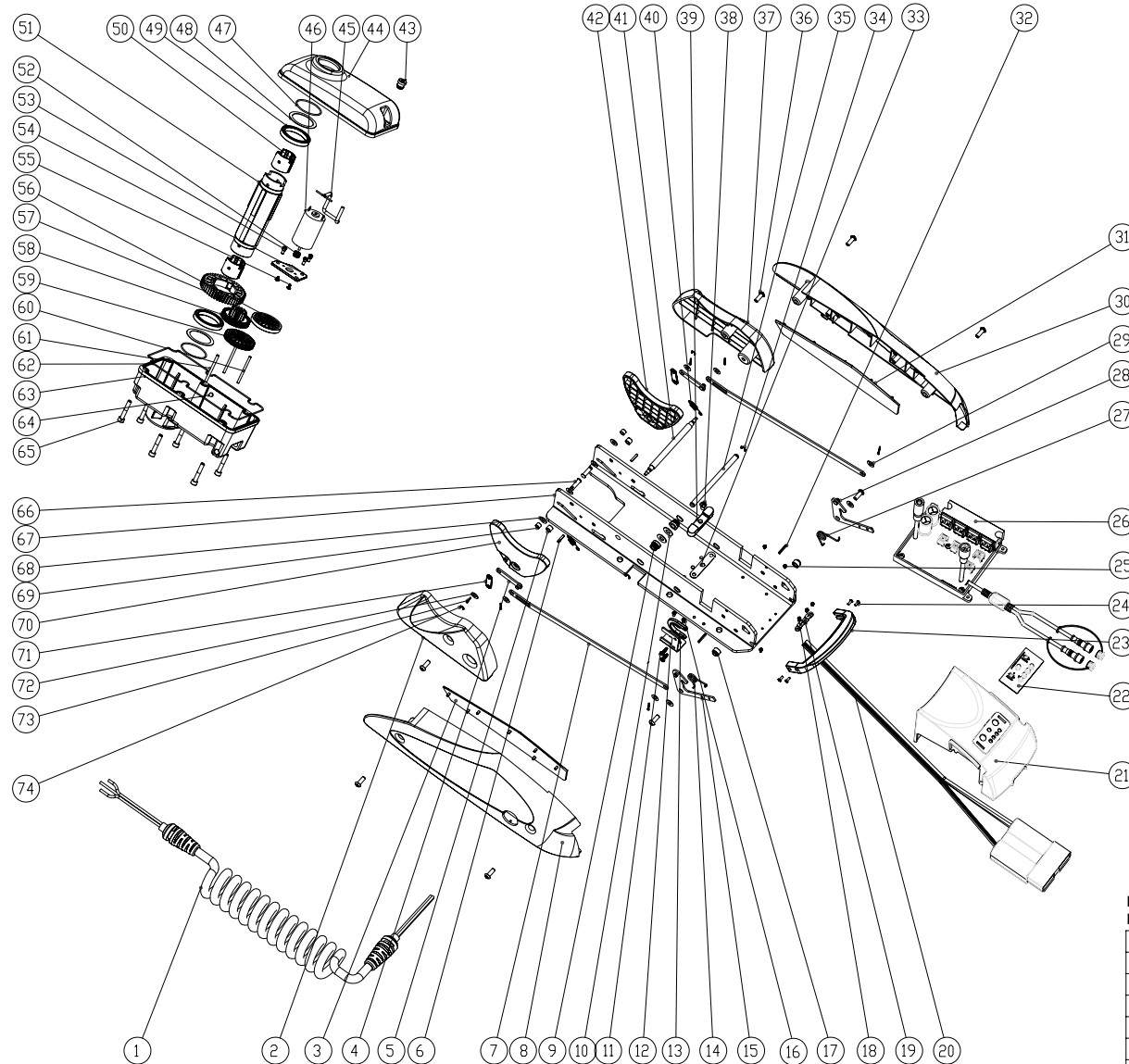


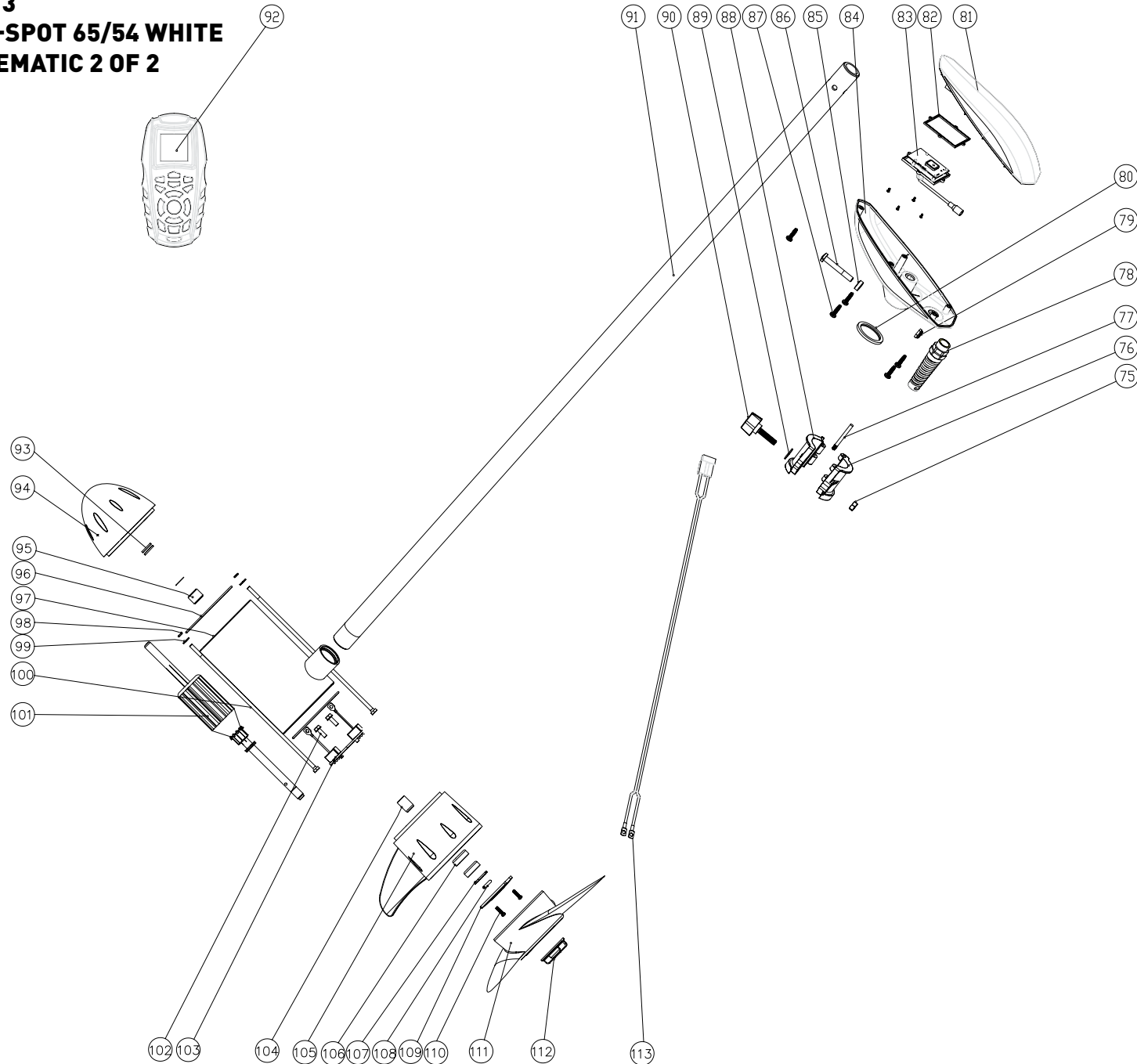
55313 GEO-SPOT 65/54 WHITE SCHEMATIC 1 OF 2



Key Part No.	Part Number	Part Name	Q'TY
74	HP8.245.078.00	C-retaining ring	4
73	HP8.264.569.00	split pin	6
72	HP8.940.056.00	run gear washer	2
71	HP8.350.002.45	push rod	2
70	HP6.154.014.00	right portable plate assy	1
69	HP8.220.396.00	bushing	2
68	HP8.940.091.00	rocker arm sleeve washer	6
67	HP8.601.075.27	bottom plate	1
66	HP8.264.417.00	secondary pin	2
65	HP8.902.207.00	bolt	6
64	HP8.530.046.06	alnico	1
63	HP8.010.063.158	bottom cover of turning box	1
62	HP8.683.098.00	sealing ring	1
61	HP8.264.413.45	pin	1
60	HP8.264.412.45	pin	2
59	HP8.415.191.00	gear	1
58	HP8.415.192.00	gear	1
57	HP8.415.193.00	gear	1
56	HP6.371.016.00	gear	1
55	HP8.902.025.00	bolt	2
54	HP8.610.119.24	locking plate	1
53	HP8.904.072.45	bolt	3
52	HP8.415.190.00	small gear	1
51	HP8.210.449.27	bushing	1
50	HP8.210.450.00	bushing	2
49	HP6.263.067.02	bearing 40X52X7	2
48	HP8.940.746.00	wear-resisting piece	2
47	HP8.662.082.00	sealing ring	2
46	HP7.274.005.00	motor	1
45	HP6.647.201.000	two core wire assy	1
44	HP8.010.062.158	top cover of turning box	1
43	HP8.210.332.00	wire protecting sleeve	1
42	HP6.154.013.00	left portable plate assy	1
41	HP8.306.071.00	axis	1
40	HP8.381.033.00	tension spring	2
39	HP8.683.041.00	elastic spacer	1
38	HP8.902.384.45	bolt	1
37	HP8.634.074.70	front left side cover	1
36	HP8.902.196.00	bolt	8
35	HP8.303.025.45	rotation axis	1
34	HP8.245.079.00	C-retaining ring	2
33	HP8.941.178.00	gasket	1
32	HP8.264.162.00	split pin	2
31	HP8.634.083.70	left plate	1
30	HP8.634.114.8000	left side plate	1
29	HP6.154.008.00	left crank assy	1
28	HP8.940.081.00	washer	2
27	HP8.383.128.00	right-handed torsion spring	1
26	HP6.702.091.000	drive controller	1
25	HP8.902.024.00	screw	3
24	HP8.902.201.45	bolt M3X8	4
23	HP8.335.001.00	footplate	1
22	HP6.672.113.000	display assy	1
21	HP8.010.105.070	front cover	1
20	HP6.647.252.000	main battery cable	1
19	HP8.610.193.00	press plate	1
18	HP8.902.017.00	screw	3
17	HP8.210.336.00	crank shaft sleeve	2
16	HP8.902.256.00	screw	2
15	HP6.154.009.00	right crank assy	1
14	HP8.383.127.00	left-handed torsion spring	1
13	HP8.667.036.70	fixation clamp	1
12	HP8.611.133.00	fixed mount	1
11	HP8.903.059.00	screw	2
10	HP8.940.375.00	gear axis washer	2
9	HP8.210.484.00	nesting	2
8	HP8.634.115.8000	right side plate	1
7	HP8.350.013.45	drag link	2
6	HP8.264.160.00	split pin	2
5	HP8.220.292.00	locating sleeve	2
4	HP6.201.027.00	secondary lever assy	2
3	HP8.634.084.70	right plate	1
2	HP8.634.075.70	front right side cover	1
1	HP6.647.204.000	wire assy	1

No.	DRAWING No.	PART NAME	Q'TY	No.	DRAWING No.	PART NAME	Q'TY
-----	-------------	-----------	------	-----	-------------	-----------	------

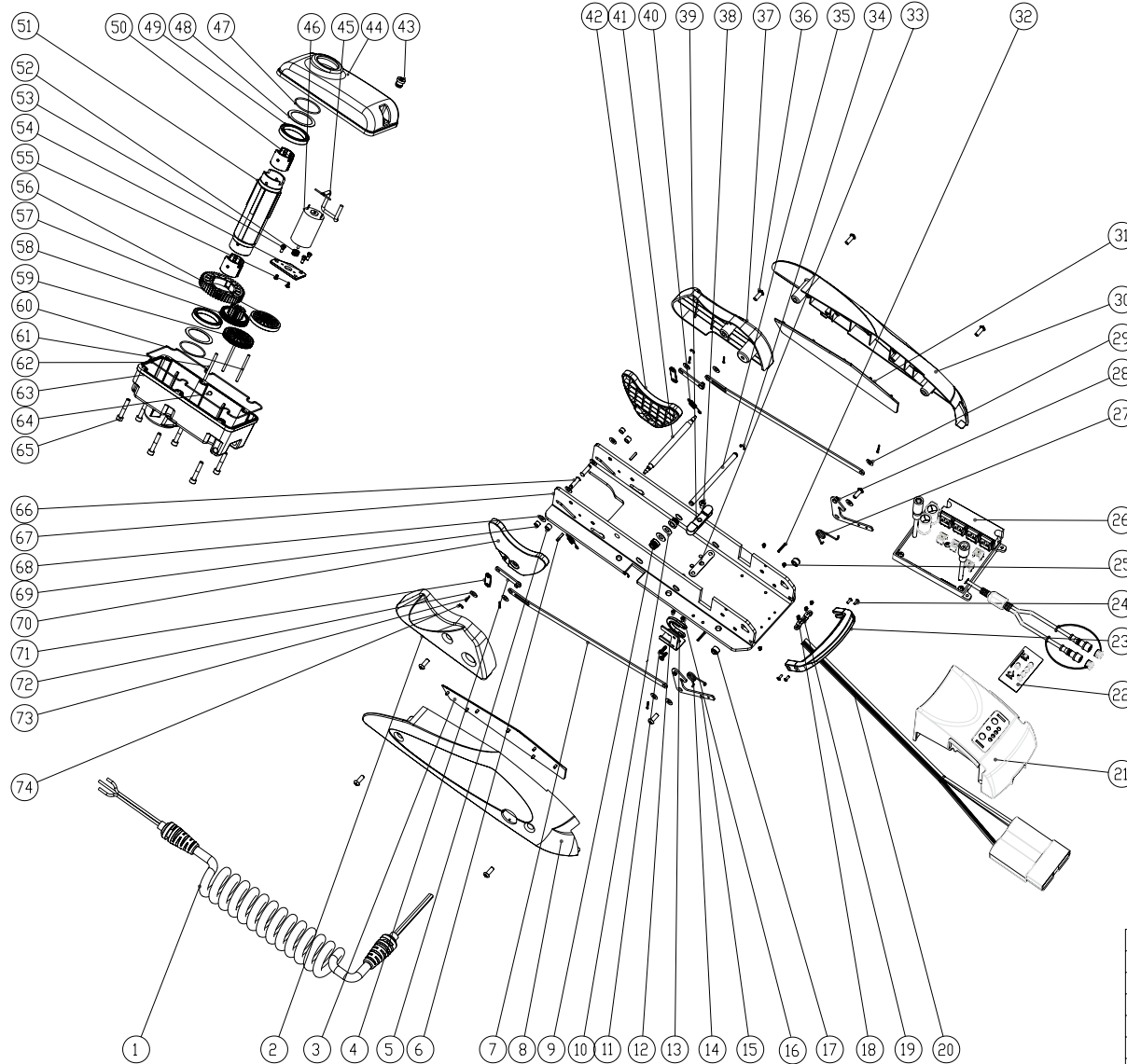
55313
GEO-SPOT 65/54 WHITE
SCHEMATIC 2 OF 2



Key Part No.	Part Number	Part Name	QTY
113	HP6.647.172.00	main battery cable	1
112	HP6.482.001.00	prop nut	1
111	HP6.393.001.8000	prop	1
110	HP8.903.187.000	screw	2
109	HP7.690.001.00	sacrificial anode	1
108	HP8.264.157.00	pin	1
107	HP8.683.049.45	retainer ring	1
106	HP6.475.000.00	sealing ring	2
105	HP8.010.070.158	front cover	1
104	HP8.251.000.00	oil bearing	1
103	HP6.670.095.000	brush frame assy	1
102	HP8.903.060.07	bolt	2
101	HP6.656.022.00	rotor assy	1
100	HP8.926.018.00	connecting screw rod	2
99	HP8.610.049.00	hexagonal washer	2
98	HP8.662.015.00	mini O-sealing ring	2
97	HP6.652.015.02	stator assy	1
96	HP8.662.016.00	o-sealing ring	2
95	HP8.251.001.00	oil bearing	1
94	HP8.010.071.158	back cover	1
93	HP6.260.000.00	thrust bearing	1
92	HP6.789.006.003	remote controller	1
91	HP6.657.142.999	shaft	1
90	HP6.480.014.00	bolt	1
89	HP8.940.313.00	washer	1
88	HP8.242.153.00	right body of depth adjustment collar	1
87	HP8.903.059.00	screw	5
86	HP8.926.045.00	bolt	1
85	HP8.220.378.70	bushing	1
84	HP8.076.337.8000	bottom cover	1
83	HP6.702.092.000	GPS controller	1
82	HP8.683.137.000	sealing ring	1
81	HP8.076.336.8000	top cover	1
80	HP8.662.083.00	sealing ring	1
79	HP6.482.000.00	lock nut	1
78	HP8.354.019.000	cable fixing head	1
77	HP8.264.468.00	pin	1
76	HP8.242.152.00	left body of depth adjustment collar	1
75	HP8.379.073.00	nut	1
No.	DRAWING NO.	PART NAME	QTY

55315 GEO-SPOT 65/54 BLACK

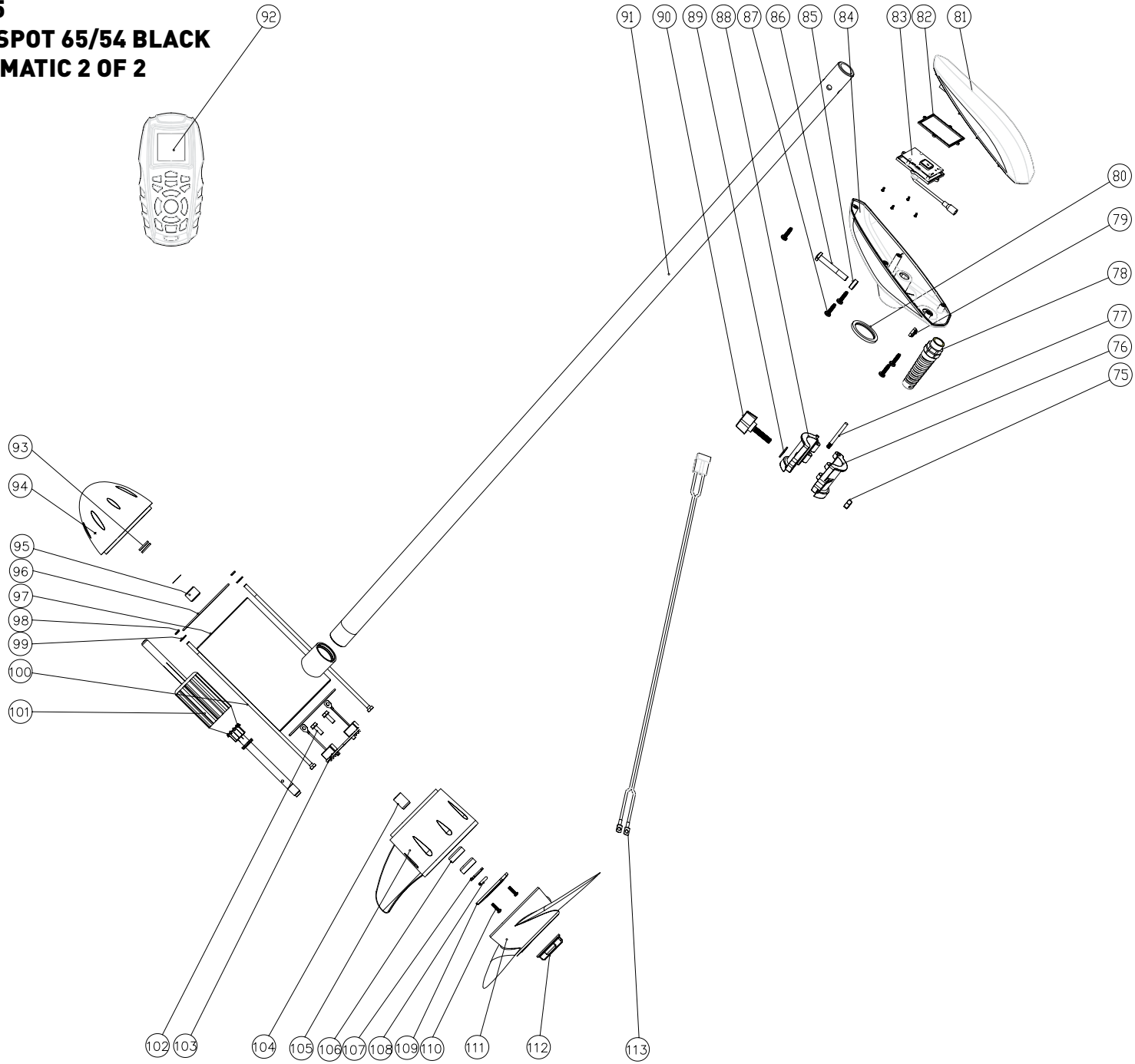
SCHEMATIC 1 OF 2



Key Part No.	Part No.	Part Name	Q'TY	Part No.	Part Name	Q'TY	
74	HP8.245.078.00	C-retaining ring	4	14	HP8.383.127.00	left-handed torsion spring	1
73	HP8.264.569.00	split pin	6	13	HP8.667.036.70	fixation clamp	1
72	HP8.940.056.00	run gear washer	2	12	HP8.611.133.00	fixed mount	1
71	HP8.350.002.45	push rod	2	11	HP8.903.059.00	screw	2
70	HP6.154.014.00	right portable plate assy	1	10	HP8.940.375.00	gear axis washer	2
69	HP8.220.396.00	bushing	2	9	HP8.210.484.00	nesting	2
68	HP8.940.091.00	rocker arm sleeve washer	6	8	HP8.634.115.8001	right side plate	1
67	HP8.601.075.27	bottom plate	1	7	HP8.350.013.45	drag link	2
66	HP8.264.417.00	secondary pin	2	6	HP8.264.160.00	split pin	2
65	HP8.902.207.00	bolt	6	5	HP8.220.292.00	locating sleeve	2
64	HP8.530.046.06	alnico	1	4	HP6.201.027.00	secondary lever assy	2
63	HP8.010.063.015	bottom cover of turning box	1	3	HP8.634.084.00	right plate	1
62	HP8.683.098.00	sealing ring	1	2	HP8.634.075.000	front right side cover	1
61	HP8.264.413.45	pin	1	1	HP6.647.204.000	wire assy	1
60	HP8.264.412.45	pin	2				
59	HP8.415.191.00	gear	1				
58	HP8.415.192.00	gear	1				
57	HP8.415.193.00	gear	1				
56	HP6.371.016.00	gear	1				
55	HP8.902.025.00	bolt	2				
54	HP8.610.119.24	locking plate	1				
53	HP8.904.072.45	bolt	3				
52	HP8.415.190.00	small gear	1				
51	HP8.210.449.27	bushing	1				
50	HP8.210.450.00	bushing	2				
49	HP6.263.067.02	bearing 40X52X7	2				
48	HP8.940.746.00	wear-resisting piece	2				
47	HP8.662.082.00	sealing ring	2				
46	HP7.274.005.00	motor	1				
45	HP6.647.201.000	two core wire assy	1				
44	HP8.010.062.015	top cover of turning box	1				
43	HP8.210.332.00	wire protecting sleeve	1				
42	HP6.154.013.00	left portable plate assy	1				
41	HP8.306.071.00	axis	1				
40	HP8.381.033.00	tension spring	2				
39	HP8.683.041.00	elastic spacer	1				
38	HP8.902.384.45	bolt	1				
37	HP8.634.074.000	front left side cover	1				
36	HP8.902.196.00	bolt	8				
35	HP8.303.025.45	rotation axis	1				
34	HP8.245.079.00	C-retaining ring	2				
33	HP8.941.178.00	gasket	1				
32	HP8.264.162.00	split pin	2				
31	HP8.634.083.00	left plate	1				
30	HP8.634.114.8001	left side plate	1				
29	HP6.154.008.00	left crank assy	1				
28	HP8.940.081.00	washer	2				
27	HP8.383.128.00	right-handed torsion spring	1				
26	HP6.702.091.000	drive controller	1				
25	HP8.902.024.00	screw	3				
24	HP8.902.201.45	bolt M3X8	4				
23	HP8.335.001.00	footplate	1				
22	HP6.672.113.000	display assy	1				
21	HP8.010.105.8001	front cover	1				
20	HP6.647.252.000	main battery cable	1				
19	HP8.610.193.00	press plate	1				
18	HP8.902.017.00	screw	3				
17	HP8.210.336.00	crank shaft sleeve	2				
16	HP8.902.256.00	screw	2				
15	HP6.154.009.00	right crank assy	1				

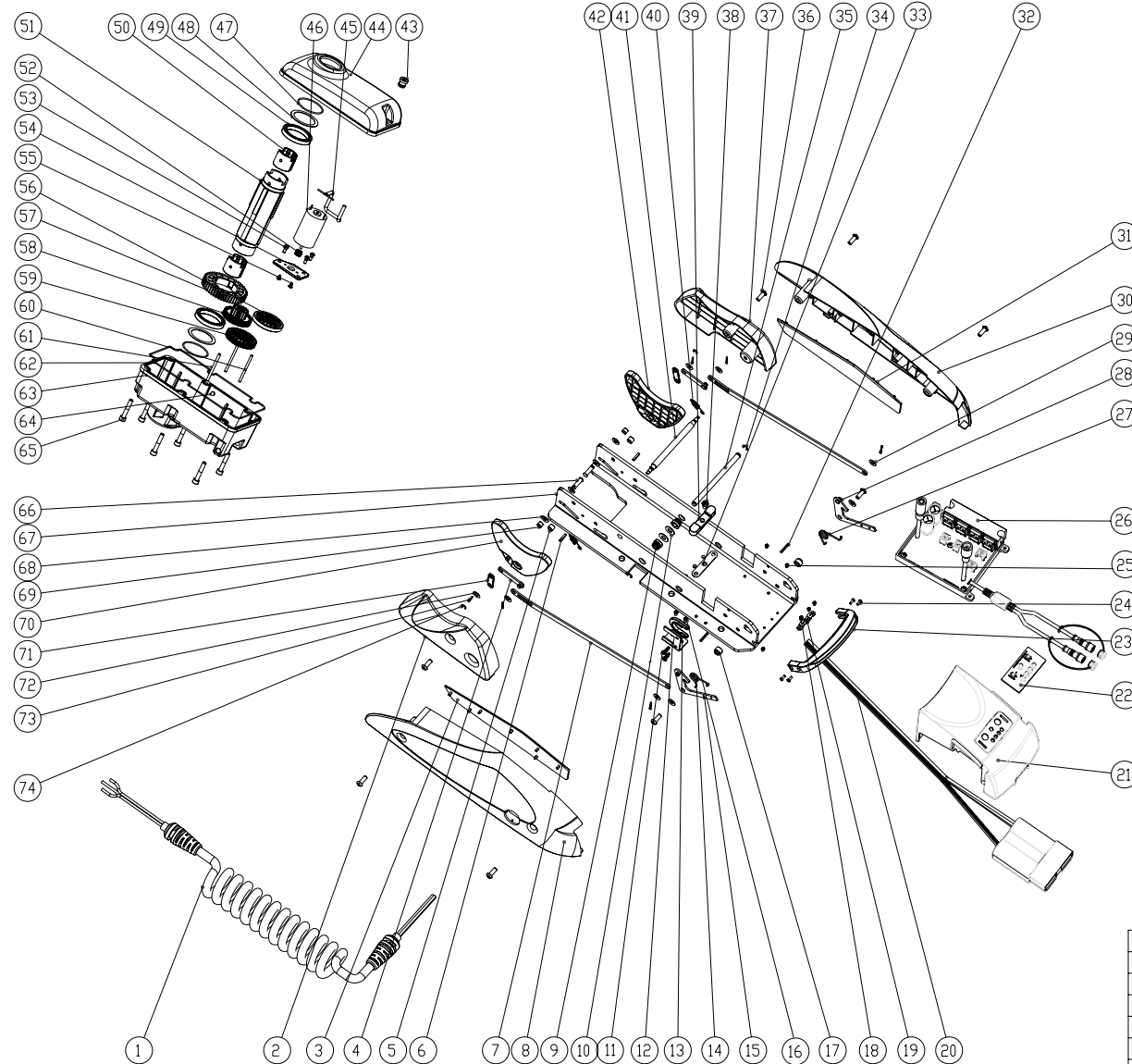
No.	DRAWING No.	PART NAME	Q'TY	No.	DRAWING No.	PART NAME	Q'TY
-----	-------------	-----------	------	-----	-------------	-----------	------

55315
GEO-SPOT 65/54 BLACK
SCHEMATIC 2 OF 2



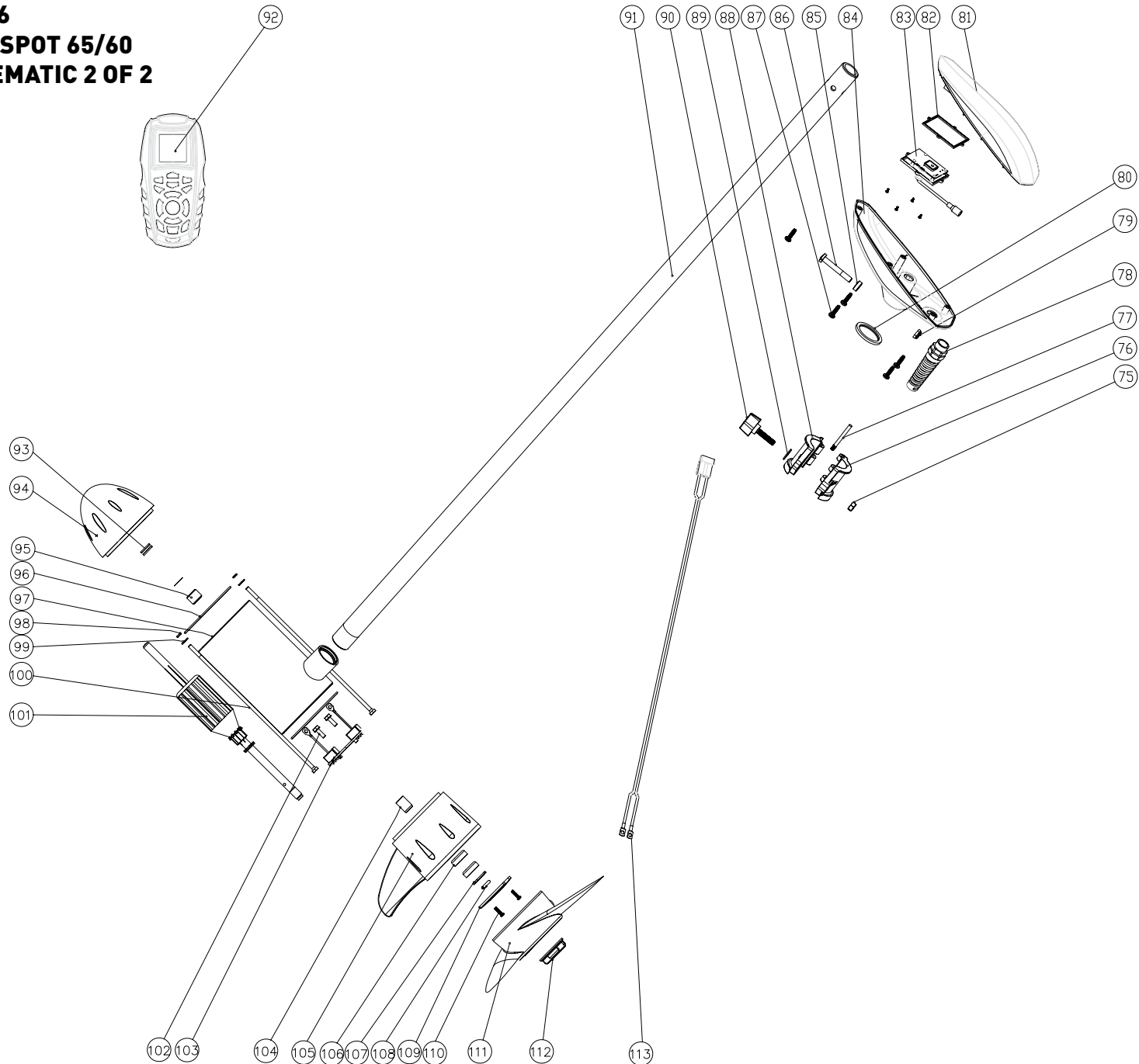
Key Part No.	Part Number	Part Name	Qty
113	HP6.647.172.00	main battery cable	1
112	HP6.482.001.00	prop nut	1
111	HP6.393.001.8000	prop	1
110	HP8.903.187.000	screw	2
109	HP7.690.001.00	sacrificial anode	1
108	HP8.264.157.00	pin	1
107	HP8.683.049.45	retainer ring	1
106	HP6.475.000.00	sealing ring	2
105	HP8.010.070.015	front cover	1
104	HP8.251.000.00	oil bearing	1
103	HP6.670.095.000	brush frame assy	1
102	HP8.903.060.07	bolt	2
101	HP6.656.022.00	rotor assy	1
100	HP8.926.018.00	connecting screw rod	2
99	HP8.610.049.00	hexagonal washer	2
98	HP8.662.015.00	mini O-sealing ring	2
97	HP6.652.015.00	stator assy	1
96	HP8.662.016.00	o-sealing ring	2
95	HP8.251.001.00	oil bearing	1
94	HP8.010.071.015	back cover	1
93	HP6.260.000.00	thrust bearing	1
92	HP6.789.006.003	remote controller	1
91	HP6.657.144.999	shaft	1
90	HP6.480.014.00	bolt	1
89	HP8.940.313.00	washer	1
88	HP8.242.153.00	right body of depth adjustment collar	1
87	HP8.903.059.00	screw	5
86	HP8.926.045.00	bolt	1
85	HP8.220.378.70	bushing	1
84	HP8.076.337.8001	bottom cover	1
83	HP6.702.092.000	GPS controller	1
82	HP8.683.137.000	sealing ring	1
81	HP8.076.336.8001	top cover	1
80	HP8.662.083.00	sealing ring	1
79	HP6.482.000.00	lock nut	1
78	HP8.354.019.000	cable fixing head	1
77	HP8.264.468.00	pin	1
76	HP8.242.152.00	left body of depth adjustment collar	1
75	HP8.379.073.00	nut	1
No.	DRAWING NO.	PART NAME	QTY

55316 GEO-SPOT 65/60 SCHEMATIC 1 OF 2



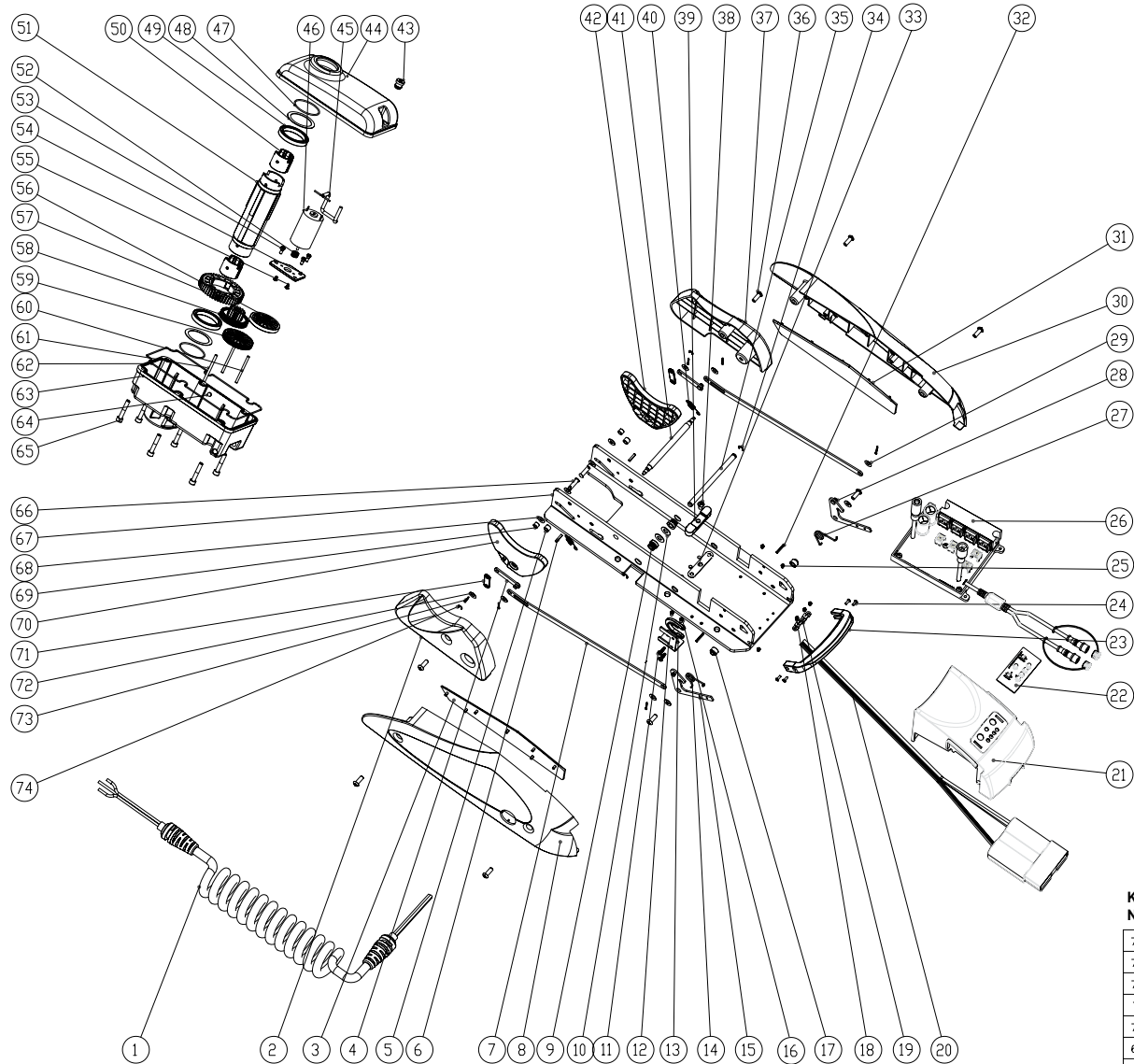
Key Part No.	Part Number	Part Name	Q'TY				
74	HP8.245.078.00	C-retaining ring	4				
73	HP8.264.569.00	split pin	6				
72	HP8.940.056.00	run gear washer	2				
71	HP8.350.002.45	push rod	2				
70	HP6.154.014.00	right portable plate assy	1				
69	HP8.220.396.00	bushing	2				
68	HP8.940.091.00	rocker arm sleeve washer	6				
67	HP8.601.075.27	bottom plate	1				
66	HP8.264.417.00	secondary pin	2				
65	HP8.902.207.00	bolt	6				
64	HP8.530.046.06	alnico	1				
63	HP8.010.063.158	bottom cover of turning box	1				
62	HP8.683.098.00	sealing ring	1				
61	HP8.264.413.45	pin	1				
60	HP8.264.412.45	pin	2				
59	HP8.415.191.00	gear	1				
58	HP8.415.192.00	gear	1				
57	HP8.415.193.00	gear	1				
56	HP6.371.016.00	gear	1				
55	HP8.902.025.00	bolt	2				
54	HP8.610.119.24	locking plate	1				
53	HP8.904.072.45	bolt	3				
52	HP8.415.190.00	small gear	1				
51	HP8.210.449.27	bushing	1				
50	HP8.210.450.00	bushing	2				
49	HP6.263.067.02	bearing 40X52X7	2				
48	HP8.940.746.00	wear-resisting piece	2				
47	HP8.662.082.00	sealing ring	2				
46	HP7.274.005.00	motor	1				
45	HP6.647.201.000	two core wire assy	1				
44	HP8.010.062.158	top cover of turning box	1				
43	HP8.210.332.00	wire protecting sleeve	1				
42	HP6.154.013.00	left portable plate assy	1				
41	HP8.306.071.00	axis	1				
40	HP8.381.033.00	tension spring	2				
39	HP8.683.041.00	elastic spacer	1				
38	HP8.902.384.45	bolt	1				
37	HP8.634.074.70	front left side cover	1				
36	HP8.902.196.00	bolt	8				
35	HP8.303.025.45	rotation axis	1				
34	HP8.245.079.00	C-retaining ring	2				
33	HP8.941.178.00	gasket	1				
32	HP8.264.162.00	split pin	2				
31	HP8.634.083.70	left plate	1				
30	HP8.634.114.8000	left side plate	1				
29	HP6.154.008.00	left crank assy	1				
28	HP8.940.081.00	washer	2				
27	HP8.383.128.00	right-handed torsion spring	1				
26	HP6.702.091.000	drive controller	1				
25	HP8.902.024.00	screw	3				
24	HP8.902.201.45	bolt M3X8	4				
23	HP8.335.001.00	footplate	1				
22	HP6.672.113.000	display assy	1				
21	HP8.010.105.8000	front cover	1				
20	HP6.647.252.000	main battery cable	1				
19	HP8.610.193.00	press plate	1				
18	HP8.902.017.00	screw	3				
17	HP8.210.336.00	crank shaft sleeve	2				
16	HP8.902.256.00	screw	2				
15	HP6.154.009.00	right crank assy	1				
14	HP8.383.127.00	left-handed torsion spring	1				
13	HP8.667.036.70	fixation clamp	1				
12	HP8.611.133.00	fixed mount	1				
11	HP8.903.059.00	screw	2				
10	HP8.940.375.00	gear axis washer	2				
9	HP8.210.484.00	nesting	2				
8	HP8.634.115.8000	right side plate	1				
7	HP8.350.013.45	drag link	2				
6	HP8.264.160.00	split pin	2				
5	HP8.220.292.00	locating sleeve	2				
4	HP6.201.027.00	secondary lever assy	2				
3	HP8.634.084.70	right plate	1				
2	HP8.634.075.70	front right side cover	1				
1	HP6.647.204.000	wire assy	1				
No.	DRAWING No.	PART NAME	Q'TY	No.	DRAWING No.	PART NAME	Q'TY

55316
GEO-SPOT 65/60
SCHEMATIC 2 OF 2



Key Part No.	Part Number	Part Name	Q'TY
113	HP6.647.172.00	main battery cable	1
112	HP6.482.001.00	prop nut	1
111	HP6.393.001.8000	prop	1
110	HP8.903.187.000	screw	2
109	HP7.690.001.00	sacrificial anode	1
108	HP8.264.157.00	pin	1
107	HP8.683.049.45	retainer ring	1
106	HP6.475.000.00	sealing ring	2
105	HP8.010.070.158	front cover	1
104	HP8.251.000.00	oil bearing	1
103	HP6.670.106.000	brush frame assy	1
102	HP8.903.060.07	bolt	2
101	HP6.656.022.00	rotor assy	1
100	HP8.926.018.00	connecting screw rod	2
99	HP8.610.049.00	hexagonal washer	2
98	HP8.662.015.00	mini O-sealing ring	2
97	HP6.652.015.02	stator assy	1
96	HP8.662.016.00	o-sealing ring	2
95	HP8.251.001.00	oil bearing	1
94	HP8.010.071.158	back cover	1
93	HP6.260.000.00	thrust bearing	1
92	HP6.789.006.003	remote controller	1
91	HP6.657.145.999	shaft	1
90	HP6.480.014.00	bolt	1
89	HP8.940.313.00	washer	1
88	HP8.242.153.00	right body of depth adjustment collar	1
87	HP8.903.059.00	screw	5
86	HP8.926.045.00	bolt	1
85	HP8.220.378.70	bushing	1
84	HP8.076.337.8000	bottom cover	1
83	HP6.702.092.000	GPS controller	1
82	HP8.683.137.000	sealing ring	1
81	HP8.076.336.8000	top cover	1
80	HP8.662.083.00	sealing ring	1
79	HP6.482.000.00	lock nut	1
78	HP8.354.019.000	cable fixing head	1
77	HP8.264.468.00	pin	1
76	HP8.242.152.00	left body of depth adjustment collar	1
75	HP8.379.073.00	nut	1
No.	DRAWING NO.	PART NAME	Q'TY

55314 GEO-SPOT 65/66 SCHEMATIC 1 OF 2

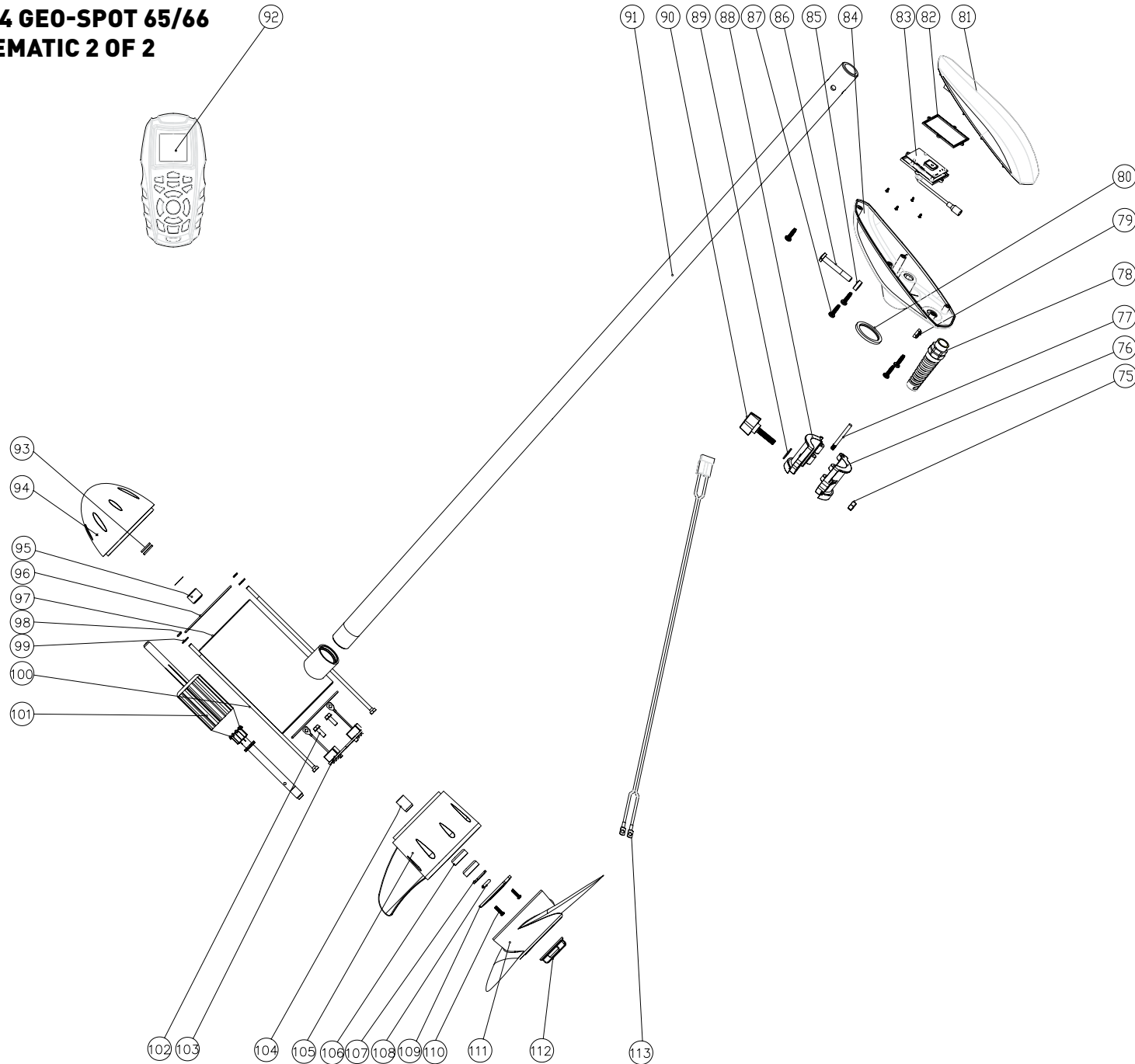


60	HP8.264.412.45	pin	2
59	HP8.415.191.00	gear	1
58	HP8.415.192.00	gear	1
57	HP8.415.193.00	gear	1
56	HP6.371.016.00	gear	1
55	HP8.902.025.00	bolt	2
54	HP8.610.119.24	locking plate	1
53	HP8.904.072.45	bolt	3
52	HP8.415.190.00	small gear	1
51	HP8.210.449.27	bushing	1
50	HP8.210.450.00	bushing	2
49	HP6.263.067.02	bearing 40X52X7	2
48	HP8.940.746.00	wear-resisting piece	2
47	HP8.662.082.00	sealing ring	2
46	HP7.274.005.00	motor	1
45	HP6.647.201.000	two core wire assy	1
44	HP8.010.062.158	top cover of turning box	1
43	HP8.210.332.00	wire protecting sleeve	1
42	HP6.154.013.00	left portable plate assy	1
41	HP8.306.071.00	axls	1
40	HP8.381.033.00	tension spring	2
39	HP8.683.041.00	elastic spacer	1
38	HP8.902.384.45	bolt	1
37	HP8.634.074.70	front left side cover	1
36	HP8.902.196.00	bolt	8
35	HP8.303.025.45	rotation axis	1
34	HP8.245.079.00	C-retaining ring	2
33	HP8.941.178.00	gasket	1
32	HP8.264.162.00	split pin	2
31	HP8.634.083.70	left plate	1
30	HP8.634.114.8000	left side plate	1
29	HP6.154.008.00	left crank assy	1
28	HP8.940.081.00	washer	2
27	HP8.383.128.00	right-handed torsion spring	1
26	HP6.702.091.000	drive controller	1
25	HP8.902.024.00	screw	3
24	HP8.902.201.45	bolt M3X8	4
23	HP8.335.001.00	footplate	1
22	HP6.672.113.000	display assy	1
21	HP8.010.105.8002	front cover	1
20	HP6.647.252.000	main battery cable	1
19	HP8.610.193.00	press plate	1
18	HP8.902.017.00	screw	3
17	HP8.210.336.00	crank shaft sleeve	2
16	HP8.902.256.00	screw	2
15	HP6.154.009.00	right crank assy	1

Key Part No.	Part Number	Part Name	Q'TY
74	HP8.245.078.00	C-retaining ring	4
73	HP8.264.569.00	split pin	6
72	HP8.940.056.00	run gear washer	2
71	HP8.350.002.45	push rod	2
70	HP6.154.014.00	right portable plate assy	1
69	HP8.220.396.00	bushing	2
68	HP8.940.091.00	rocker arm sleeve washer	6
67	HP8.601.075.27	bottom plate	1
66	HP8.264.417.00	secondary pin	2
65	HP8.902.207.00	bolt	6
64	HP8.530.046.06	alnico	1
63	HP8.010.063.158	bottom cover of turning box	1
62	HP8.683.098.00	sealing ring	1
61	HP8.264.413.45	pin	1
14	HP8.383.127.00	left-handed torsion spring	1
13	HP8.667.036.70	fixation clamp	1
12	HP8.611.133.00	fixed mount	1
11	HP8.903.059.00	screw	2
10	HP8.940.375.00	gear axis washer	2
9	HP8.210.484.00	nesting	2
8	HP8.634.115.8000	right side plate	1
7	HP8.350.013.45	drag link	2
6	HP8.264.160.00	split pin	2
5	HP8.220.292.00	locating sleeve	2
4	HP6.201.027.00	secondary lever assy	2
3	HP8.634.084.70	right plate	1
2	HP8.634.075.70	front right side cover	1
1	HP6.647.204.000	wire assy	1

No.	DRAWING No.	PART NAME	Q'TY	No.	DRAWING No.	PART NAME	Q'TY
-----	-------------	-----------	------	-----	-------------	-----------	------

55314 GEO-SPOT 65/66
SCHEMATIC 2 OF 2



Key Part No.	Part Number	Part Name	QTY
113	HP6.647.172.00	main battery cable	1
112	HP6.482.001.00	prop nut	1
111	HP6.393.001.8000	prop	1
110	HP8.903.187.000	screw	2
109	HP7.690.001.00	sacrificial anode	1
108	HP8.264.157.00	pin	1
107	HP8.683.049.45	retainer ring	1
106	HP6.475.000.00	sealing ring	2
105	HP8.010.070.158	front cover	1
104	HP8.251.000.00	oil bearing	1
103	HP6.670.107.000	brush frame assy	1
102	HP8.903.060.07	bolt	2
101	HP6.656.022.00	rotor assy	1
100	HP8.926.018.00	connecting screw rod	2
99	HP8.610.049.00	hexagonal washer	2
98	HP8.662.015.00	mini O-sealing ring	2
97	HP6.652.015.02	stator assy	1
96	HP8.662.016.00	o-sealing ring	2
95	HP8.251.001.00	oil bearing	1
94	HP8.010.071.158	back cover	1
93	HP6.260.000.00	thrust bearing	1
92	HP6.789.006.003	remote controller	1
91	HP6.657.146.999	shaft	1
90	HP6.480.014.00	bolt	1
89	HP8.940.313.00	washer	1
88	HP8.242.153.00	right body of depth adjustment collar	1
87	HP8.903.059.00	screw	5
86	HP8.926.045.00	bolt	1
85	HP8.220.378.70	bushing	1
84	HP8.076.337.8000	bottom cover	1
83	HP6.702.092.000	GPS controller	1
82	HP8.683.137.000	sealing ring	1
81	HP8.076.336.8000	top cover	1
80	HP8.662.083.00	sealing ring	1
79	HP6.482.000.00	lock nut	1
78	HP8.354.019.000	cable fixing head	1
77	HP8.264.468.00	pin	1
76	HP8.242.152.00	left body of depth adjustment collar	1
75	HP8.379.073.00	nut	1
No.	DRAWING NO.	PART NAME	QTY